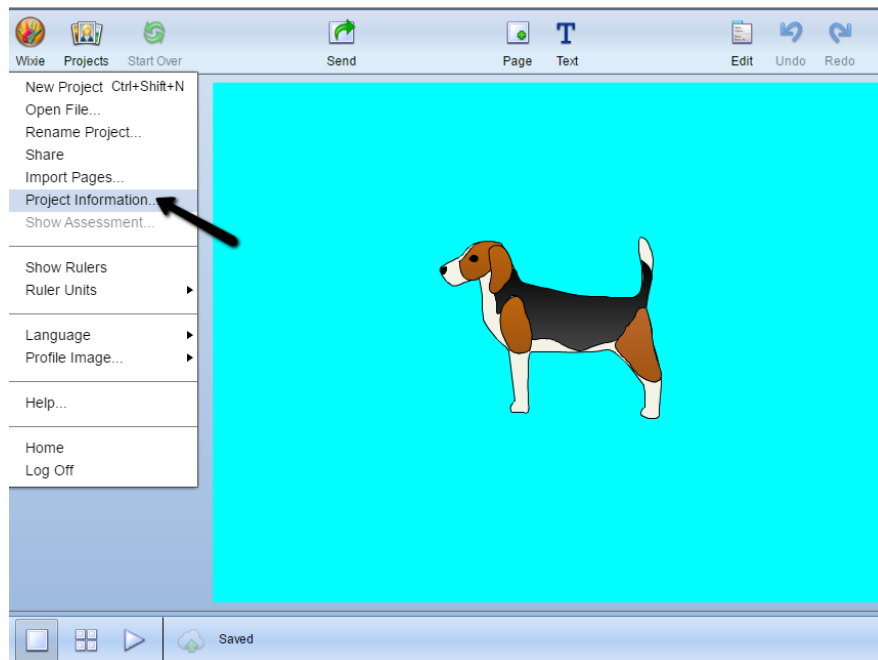


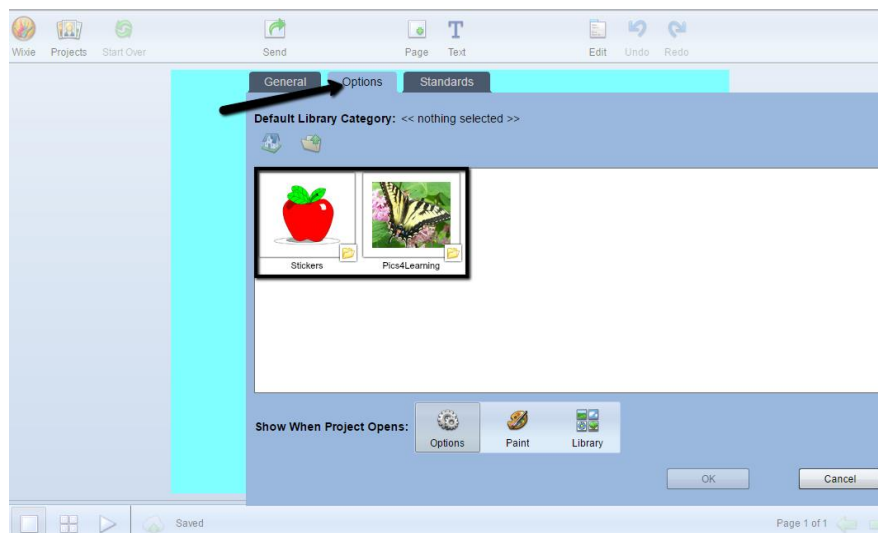
# Default Options

Click the **Wixie Hand** button on the toolbar and select **Project Information**. This section will allow teachers to select default library and toolbar options in a Wixie project.

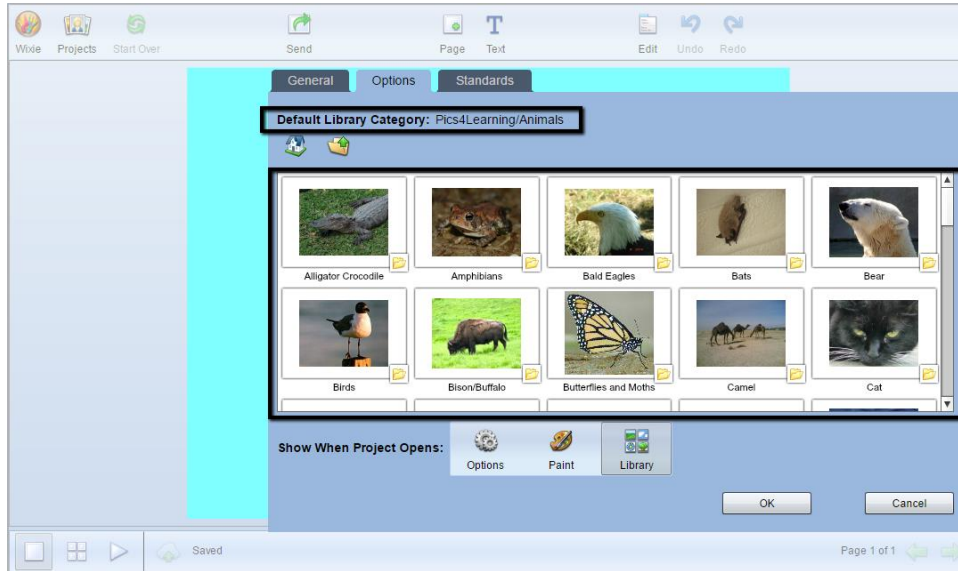


Select the **Options** tab on the **Project Information** window. Here teachers can select the **Default Library Category** students will see when they open an activity.

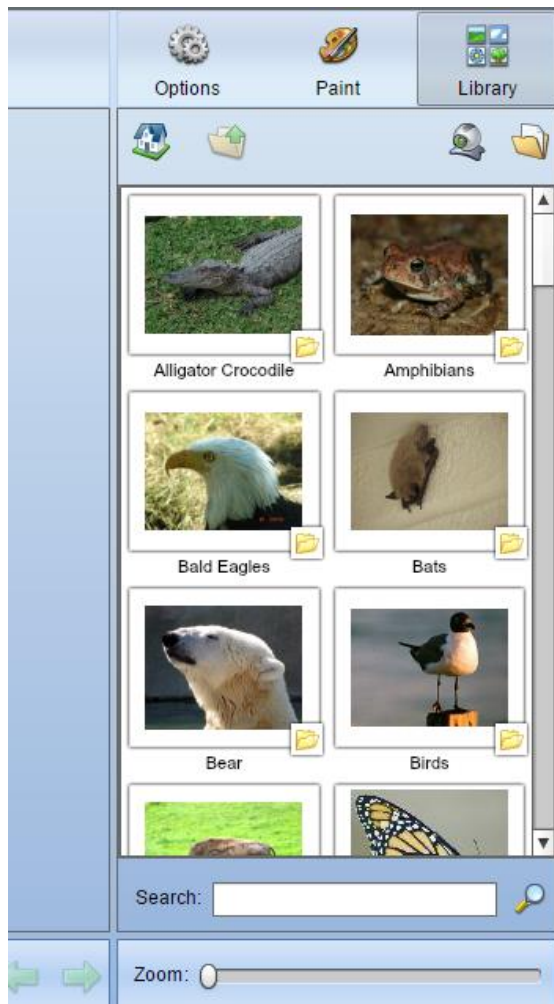
Teachers can select options from within the **Stickers** or **Pics4Learning** folders.



Once a set of folders or images has been selected it will become the **Default Library Category** students see when they open the activity.



Student view of library when they open the activity.



**Options** is the default section that is displayed when an activity is opened. Teachers can also **Paint** or **Library** to open as a default option on the toolbar.

